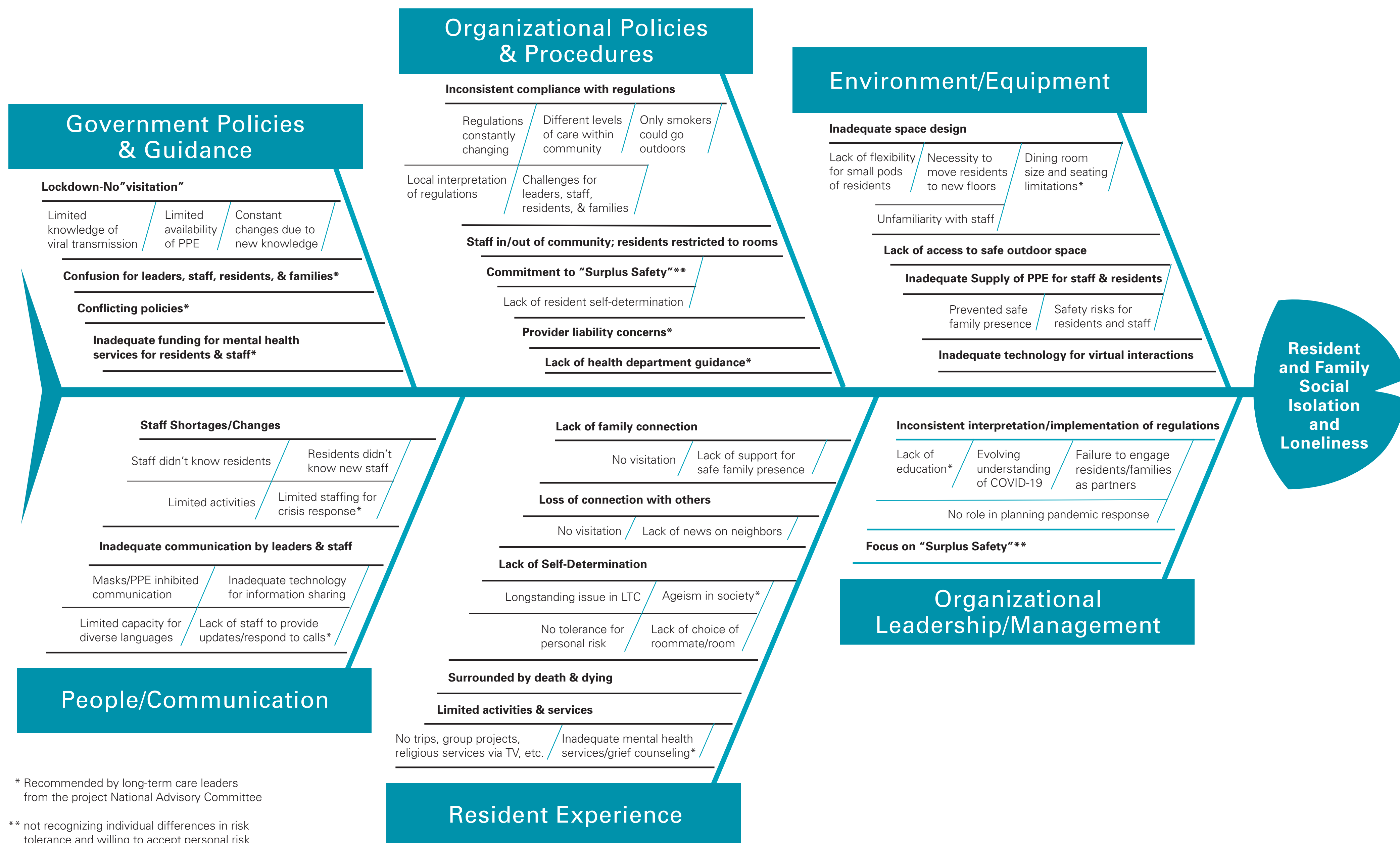


INITIAL PLANNING FOR RESEARCH

ROOT CAUSE ANALYSIS – CONTRIBUTING FACTORS

These contributing factors to social isolation and loneliness build on the key themes identified by residents and families describing their experiences in long-term care (LTC) during the COVID-19 pandemic.



* Recommended by long-term care leaders from the project National Advisory Committee

** not recognizing individual differences in risk tolerance and willing to accept personal risk